



Ajuntament  
de Barcelona

# Urban Mobility Plan of Barcelona PMU 2013-2018

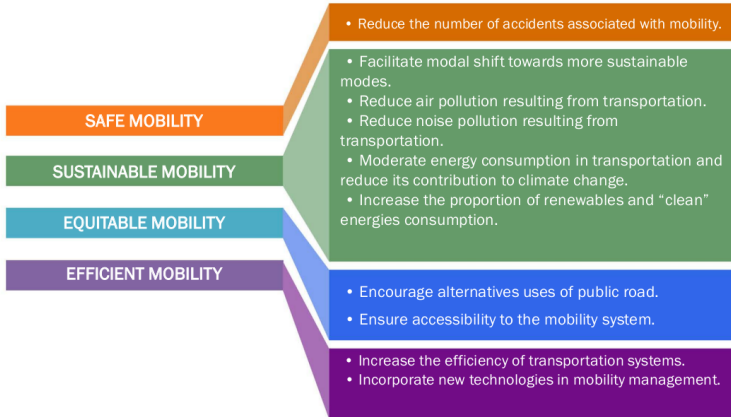


October 2014

---



## OBJECTIVES OF PMU





Ajuntament  
de Barcelona

## MODAL HIERARCHY



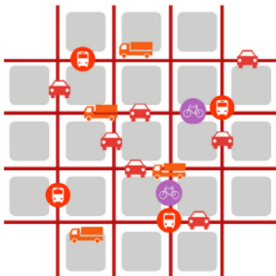


Ajuntament  
de Barcelona

Urban Mobility Plan of Barcelona 2013-2018

## SUPERBLOCKS MODEL

Current Model



Superblocks Model



- |  |  |  |                              |  |  |
|--|--|--|------------------------------|--|--|
|  | PUBLIC TRANSPORT NETWORK               |  | PRIVATE VEHICLE PASSING      |  | DUM PROXIMITY AREA                     |
|  | BICYCLES MAIN NETWORK (BIKE LANE)      |  | RESIDENTS VEHICLES           |  | ACCESS CONTROL                         |
|  | BICYCLES SIGNPOSTS (REVERSE DIRECTION) |  | URBAN SERVICES AND EMERGENCY |  | BASIC TRAFFIC NETWORK                  |
|  | FREE PASSAGE OF BICYCLES               |  | DUM CARRIERS                 |  | SINGLE PLATFORM (PEDESTRIANS PRIORITY) |



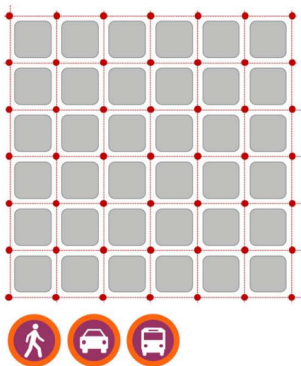


Ajuntament  
de Barcelona

Urban Mobility Plan of Barcelona 2013-2018

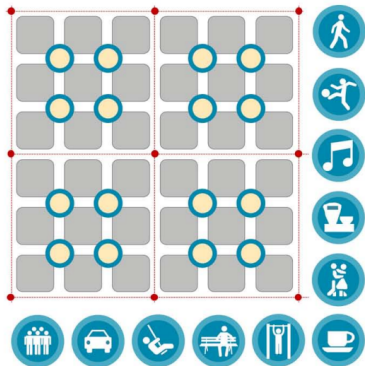
## Current Model

SINGLE USE: RIGHT OF WAY



## Superblocks Model

MULTIPLE USES AND FUNCTIONS



\$

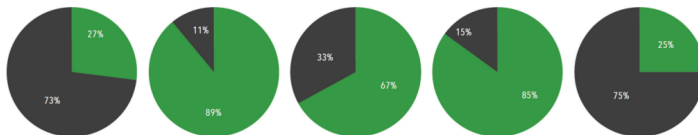


Ajuntament  
de Barcelona

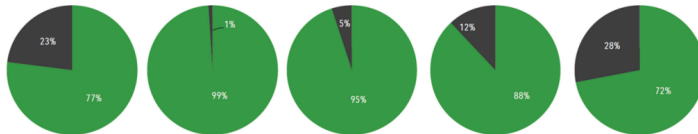
Urban Mobility Plan of Barcelona 2013-2018

## Urban quality LES CORTS SUPERBLOCK

### Current situation



### Superblocks model



Space for  
pedestrians  
(versus road)



Accessibility  
(sidewalks >2,5m)



Air quality  
(immission  
<40µg/m3 any)



Acoustic  
comfort  
(Ld <65dB(A))



Liveability  
index in  
public space



\$



\$